



空气调节用低噪声通风机

Low Noise Air Conditioning Fans



山东齐能风机有限公司

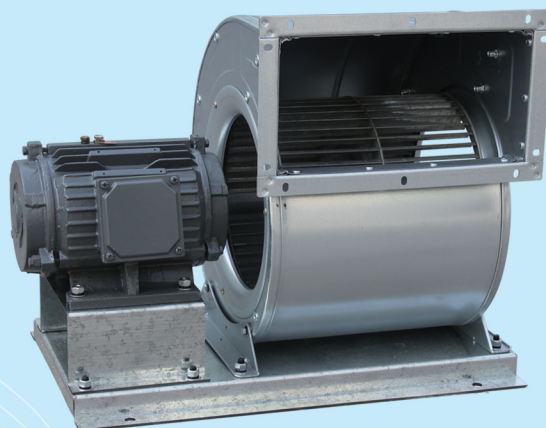
Shandong Qineng Ventilator Co.,Ltd

第八版
Version 8.0



LKW外转子离心通风机

LKW Centrifugal Fans with External Rotor motor



LKZ双进风电机直联通风机

LKZ Double-inlet Shaft-drive Centrifugal Fans



LKWD单进风外转子离心通风机

LKWD Single-inlet Centrifugal Fans



LKZD单进风电机直联通风机

LKZD Single-inlet Shaft-drive Centrifugal Fans



LKWG外转子管道风机

LKWG Duct Fans with External Rotor motor



LKZS电机直驱双联风机

LKZS Double-case Shaft-drive Centrifugal Fans



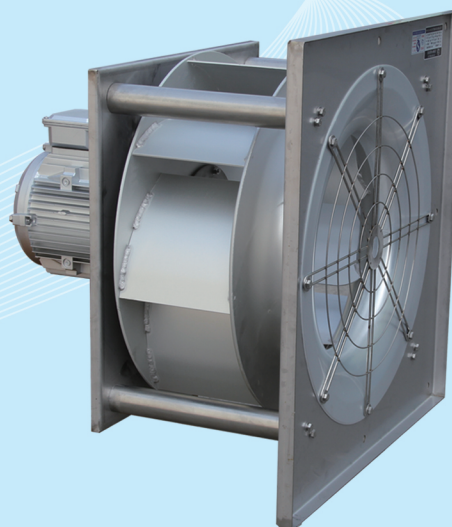
LKP皮带传动离心通风机
LKP Belt-drive Centrifugal Fans



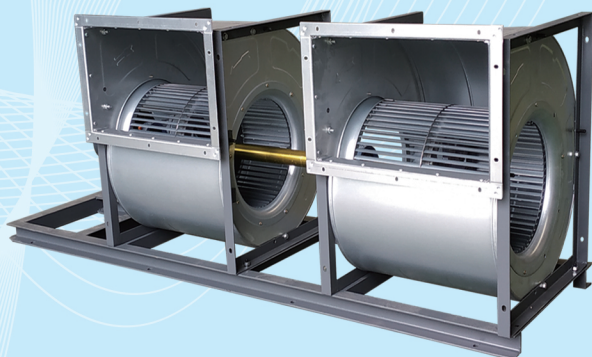
LKPH后向离心通风机
LKPH Backward-curved-blade Centrifugal Fans



LKP电机上置皮带传动离心通风机
LKP Belt-drive Centrifugal Fans



LKZWH后向无壳风机
LKZWH Plug Fans



LKPS皮带传动双联风机
LKPS Double-case Belt-drive Centrifugal Fans



ZL轴流通风机
ZL Axial fans

企业简介 Company profile

山东齐能风机有限公司是一家专门从事通风机研发、生产和销售的企业，位于历史悠久的齐国古都——山东省淄博市临淄区，地理位置优越，交通便利，公路和铁路四通八达。

公司成立于 1998 年，占地面积 30 亩，厂房面积 1 万多平方米，现有职工 100 余人。公司技术力量雄厚，拥有经验丰富的各类专业技术人员 40 余人，并与上海理工大学和山东理工大学分别建立了科研合作关系。公司技术研发中心现设有风机设计、电机设计、风机性能测试中心、CFD 仿真中心等科研部门，配备多台企业级图形仿真工作站，具备很强的研发能力，可以根据客户的需要，提供各种特殊订制服务，例如特殊电源、多速电机、无刷直流电机以及高低温型等特殊产品。目前，公司年产各种通风机 5 万余台，产品种类齐全，包括前向多翼离心式、后向离心式、无蜗壳离心式、轴流式等各种不同结构形式，广泛应用于楼堂馆所、轨道交通、公路客车等各种领域的暖通空调、新风机组、冷库等送排风系统中。

公司生产装备先进，检测手段齐全，现拥有数控机械加工设备、压力成型设备、电机制造设备等各种生产加工设备 180 多台套，风机试验风室 2 套和各种专业检测设备 40 多台套，生产和检验能力在国内同行中均处于领先水平。

公司一向重视管理体系建设，运用先进的科学管理体制来规范公司的日常生产活动，从制度上为公司的产品质量和服务水平提供了可靠的保障。目前，公司通过了 ISO9001 认证，风机用异步电动机通过了 CCC 认证，风机产品符合 GB19761-2009 标准规定，并达到 3 级以上能效标识。

公司以“齐心协力，尚德尚能”、“质量第一，信誉至上”为企业文化内核，在客户服务和商业信誉上时刻自律自省，积累了良好的信誉度。

公司将不懈努力，与时俱进，研发生产出更好更适合市场需求的产品，以满足广大客户的需求，共创美好未来。

企业简介 Company profile

Shandong Qineng Ventilator Co., Ltd. is a professional enterprise engaged in researching, developing, manufacturing and selling fans. It is located in Linzi District, Zibo, Shandong, which is well known as the capital of Ancient Qi. Near the company, there are many highways and railways. So we can enjoy an ascendant location and convenient transportation access.

Our company was founded in 1998. It covers an area of about 20,000 m², plant area of more than 10,000 m². We have more than 100 employees now. Our technical ability is strong. We have more than 40 experienced technicians with strong researching and developing abilities. We have established scientific research cooperation with University of Shanghai for Science and Technology and Shandong University of Technology respectively. We have some technology research departments, such as Motor Design Office, Fan Design Office, Fan Performance Testing Center, CFD Simulation Center. We also have many Enterprise-class graphics simulation workstations. Because of having the strong researching and developing abilities, we can provide various special order services according to the needs of customers, for example, special-power fans, multi-speed-motor fans, EC-motor fans, and low-temperature fans. We can currently produce more than 50,000 fans of various kinds annually. We have a great variety of fans, including Forward-curved-blade Centrifugal Fans, Backward-curved-blade Centrifugal Fans, Non-casing Centrifugal Fans, Axial fans, etc. Our products are widely used in various air-supply-and-exhaust systems such as HVAC ventilation systems, fresh-air ventilation systems and cold-storage refrigeration ventilation systems in industrial buildings, hospitals, schools, stadiums, hotels, rail transportation, bus coaches and other fields.

We have advanced production equipment and perfect testing means. We have more than 180 sets of various manufacturing equipment including CNC machining equipment, pressure-forming equipment and motor-manufacturing equipment, etc. We also have two air-chambers and more than 40 sets of professional testing equipment. Our production and inspection capabilities are in the domestic leading level.

We have always attached importance to the construction of management system. We regulate the company's daily production activities by using advanced scientific management system. We have passed the ISO9001 certification. The asynchronous motors for fan-using have passed China Compulsory Certification. The fans reached the level 3 China energy label.

We take "Encouraging collaboration, Advocating morality and ability" and "Quality first, reputation first" as the core of enterprise culture. We are always self-disciplined and self-disciplined in improving our customer service and enhancing our business reputation. So we can maintain a good business reputation.

We will make unremitting efforts to developing and producing better products to satisfy all of the customers. We hope to cooperate with you for a bright future.



目录 Catalogue

一、目录 Catalogue	I
二、产品简介 Product introduction	III
三、产品型号说明 Product model description	V
四、产品安装方式说明 Product installation mode	VIII
五、风机性能及技术参数 Performance parameters and technical data	
1. LKW 系列前向双进风外转子离心通风机	1~12
LKW Series Forward-curved-blade Double-inlet Centrifugal Fans with External Rotor motor	
2. LKWD 系列前向单进风外转子离心通风机	12~20
LKWD Series Forward-curved-blade Single-inlet Centrifugal Fans with External Rotor motor	
3. LKWG 系列外转子离心式管道风机	20~22
LKWG Series Duct Fans with External Rotor motor	
4. LKZ 系列前向双进风直联式离心通风机	22~25
LKZ Series Forward-curved-blade Double-inlet Shaft-drive Centrifugal Fans	
5. LKZS 系列双蜗壳前向直联式离心通风机	25~27
LKZS Series Double-case Forward-curved-blade Shaft-drive Centrifugal Fans	
6. LKZD 系列前向单进风直联式离心通风机	27~29
LKZD Series Forward-curved-blade Single-inlet Shaft-drive Centrifugal Fans	
7. LKZDH 系列后向单进风直联式离心通风机	29
LKZDH Series Backward-curved-blade Single-inlet Shaft-drive Centrifugal Fans	
8. LKZWH 系列后向无蜗壳单进风直联式离心通风机	29
LKZWH Series Backward-curved-blade Single-inlet Shaft-drive Plug Fans	
9. LKP 系列前向双进风皮带式离心通风机	30~37
LKP Series Forward-curved-blade Double-inlet Belt-drive Centrifugal Fans	
10. LKPS 系列双蜗壳前向皮带式离心通风机	37~39
LKPS Series Double-case Forward-curved-blade Belt-drive Centrifugal Fans	
11. LKPH 系列后向双进风皮带式离心通风机	40~42
LKPH Series Backward-curved-blade Double-inlet Belt-drive Centrifugal Fans	
12. ZL 系列轴流通风机	42
ZL Series Axial fans	



目录 Catalogue

六、风机外形及安装尺寸 Configuration dimensions

1. LKW 系列前向双进风外转子离心通风机43~49
LKW Series Forward-curved-blade Double-inlet Centrifugal Fans with External Rotor motor
2. LKWD 系列前向单进风外转子离心通风机49~53
LKWD Series Forward-curved-blade Single-inlet Centrifugal Fans with External Rotor motor
3. LKWG 系列外转子离心式管道风机54~57
LKWG Series Duct Fans with External Rotor motor
4. LKZ 系列前向双进风直联式离心通风机58~67
LKZ Series Forward-curved-blade Double-inlet Shaft-drive Centrifugal Fans
5. LKZS 系列双蜗壳前向直联式离心通风机68~72
LKZS Series Double-case Forward-curved-blade Shaft-drive Centrifugal Fans
6. LKZD 系列前向单进风直联式离心通风机73~82
LKZD Series Forward-curved-blade Single-inlet Shaft-drive Centrifugal Fans
7. LKZDH 系列后向单进风直联式离心通风机83~84
LKZDH Series Backward-curved-blade Single-inlet Shaft-drive Centrifugal Fans
8. LKZWH 系列后向无蜗壳单进风直联式离心通风机85~86
LKZWH Series Backward-curved-blade Single-inlet Shaft-drive Plug Fans
9. LKP 系列前向双进风皮带式离心通风机87~120
LKP Series Forward-curved-blade Double-inlet Belt-drive Centrifugal Fans
10. LKPS 系列双蜗壳前向皮带式离心通风机121~126
LKPS Series Double-case Forward-curved-blade Belt-drive Centrifugal Fans
11. LKPH 系列后向双进风皮带式离心通风机127~140
LKPH Series Backward-curved-blade Double-inlet Belt-drive Centrifugal Fans
12. ZL 系列轴流通风机141~143
ZL Series Axial fans

注：产品技术参数及结构尺寸，本公司有权修改，届时恕不另行通知。

Note: Products technical parameter and structure dimension, our company has the right to revise without notice.



产品简介 Product introduction

“齐能”牌空气调节用低噪声通风机是我公司开发的空调系统专用风机，包括 LK 系列离心通风机、ZL 系列轴流通风机，其流体模型经 CFD 先进技术优化，在提高输出压力的同时，降低了噪声，并提高了效率，具有节能低噪的特点，特别适合各种空调、净化、新风机组、风机盘管、风幕机等产品的配套，在宾馆、酒店、学校、医院、厂房、影剧院、矿山、高铁、城市轨道交通、大巴等领域获得了广泛应用。

LK 系列空气调节用低噪声离心通风机按传动方式分为外转子电机直联式离心通风机、Y 系列电机直联式离心通风机、皮带式离心通风机，按叶片形式分为前向离心通风机、后向离心通风机，按风机结构分为单蜗壳单进风离心通风机、单蜗壳双进风离心通风机、双蜗壳双进风离心通风机、无蜗壳离心通风机，具体包括：

1、外转子电机直联式离心通风机：

- a) LKW 系列前向双进风外转子离心通风机
- b) LKWD 系列前向单进风外转子离心通风机
- c) LKWG 系列外转子离心式管道风机

2、Y 系列电机直联式离心通风机：

- a) LKZ 系列前向双进风直联式离心通风机
- b) LKZS 系列双蜗壳前向直联式离心通风机
- c) LKZD 系列前向单进风直联式离心通风机
- d) LKZDH 系列后向单进风直联式离心通风机
- e) LKZWH 系列后向无蜗壳单进风直联式离心通风机

3、皮带式离心通风机：

- a) LKP 系列前向双进风皮带式离心通风机
- b) LKPS 系列双蜗壳前向皮带式离心通风机
- c) LKPH 系列后向双进风皮带式离心通风机

LK 系列空气调节用低噪声离心通风机具有以下显著优点：

- 1、采用了优化设计的叶轮，风量大，噪声小，效率高，环保节能；
- 2、结构简单轻巧，安装方式简便；
- 3、自主研发的配套电机，功率经过精心优化，可靠性和使用寿命均优于普通电机。
- 4、风机有 0° 、 90° 、 180° 等不同出风方向，也可根据用户需要订做其他特殊出风方向的风机产品，安装形式灵活方便。

5、我们有单相电机、三相电机、直流电机（EC）等不同电源形式的风机，还可根据用户需要订做不同电压和频率的产品，在不同国家和地区不同领域的应用都很方便。

6、风机有单速、双速、三速和无级调速等不同速度模式可供选择，以满足用户对风量调节的需要。

注：风机适用的工作环境为：海拔高度不超过 1000 米，环境温度不低于 -25°C 、不高于 $+40^{\circ}\text{C}$ ，相对湿度不超过 90%；风机输送介质为室温空气，无较大腐蚀性、不含酸性、碱性、可燃性气体，尘颗粒物不大于 $150\text{mg}/\text{m}^3$ 。使用环境、输送气体有特殊要求时，订货时应注明。

离心风机常规产品为卧式安装，若需立式安装，订货时应注明。



产品简介 Product introduction

"Qineng" brand low noise fans for air conditioning are special fans for air conditioning system developed by our company, including LK series centrifugal fans and ZI series axial fans. The fluid model is optimized by CFD advanced technology. It can improve the output pressure, reduce noise and improve efficiency. It has the characteristics of energy saving and low noise. It is especially suitable for various air conditioning, purification, new fan set, fan coil unit, wind curtain and other products. Pavilions, hotels, schools, hospitals, factories, theatres, mines, high-speed rail, urban rail transit, buses and other fields have been widely used.

LK series low noise centrifugal fans for air conditioning are divided into outer rotor motor direct drive centrifugal fans, Y series motor direct drive centrifugal fans and belt drive centrifugal fans according to transmission mode. They are divided into forward centrifugal fans and backward centrifugal fans according to blade form. They are divided into single volute single inlet centrifugal fans, single volute double inlet centrifugal fans and belt drive centrifugal fans according to fan structure. Double volute and double air intake centrifugal fans and volute-free centrifugal fans include:

1. Direct-drive Centrifugal Fans with External Rotor motor

A) LKW Series Forward-curved-blade Double-inlet Direct-drive Centrifugal Fans with External Rotor motor

B) LKWD Series Forward-curved-blade Single-inlet Direct-drive Centrifugal Fans with External Rotor motor

C) LKWG Series Direct-drive Duct Fans with External Rotor motor

2. Shaft-drive Centrifugal Fans with Y series motor

A) LKZ Series Forward-curved-blade Double-inlet Shaft-drive Centrifugal Fans

B) LKZS Series Double-case Forward-curved-blade Shaft-drive Centrifugal Fans

C) LKZD Series Forward-curved-blade Single-inlet Shaft-drive Centrifugal Fans

D) LKZDH Series Backward-curved-blade Single-inlet Shaft-drive Centrifugal Fans

E) LKZWH Series Non-case Backward-curved-blade Single-inlet Shaft-drive Centrifugal Fans

3. Belt-drive Centrifugal Fans

A) LKP Series Forward-curved-blade Double-inlet Belt-drive Centrifugal Fans

B) LKPS Series Double-case Forward-curved-blade Belt-drive Centrifugal Fans

C) LKPH Series Backward-curved-blade Double-inlet Belt-drive Centrifugal Fans

LK series low noise centrifugal fans for air conditioning have the following remarkable advantages:

1. The optimized impeller has the advantages of large air volume, low noise, high efficiency, environmental protection and energy saving.

2. The structure is simple and light, and the installation method is simple.

3. The self-developed matching motors have better reliability and service life than ordinary motors after careful optimization of power.

4. Fans have different outlet directions such as 0, 90 and 180 degrees. They can also be customized for other special outlet direction according to users' needs. The installation form is flexible and convenient.

5. We have fans for different supply forms, such as single-phase, three-phase, direct current and other different forms. We can also product fans for different voltage and frequency according to the needs of users. That's convenient for users in different countries and regions and in different fields.

6. Fans have different speed modes, such as single-speed, double-speed, three-speed and stepless speed regulation, to meet the needs of users for air volume regulation.

Attention: The fans must work in proper environment conditions, they include: no more than 1000 meters altitude, ambient temperature between -25°C and $+40^{\circ}\text{C}$, no more than 90% relative humidity. The default medium for the fans to carry is room temperature air. If you want to use the fans in different environment condition or carry other gas, you must put it out clearly at the time of ordering.

The default installation direction of our centrifugal fans is horizontal. If you need different installation directions, you must put it out clearly at the time of ordering.



产品型号说明 Product Model Description

◇ 离心通风机型号说明 Model description of centrifugal fan

例: LKWD 250 M 2-4 C3 X

离心风机型号由 7 个部分组成

Centrifugal fan model consists of seven parts

一、第一部分：型号代码，以英文字母表示

Part I: Model code, expressed in English letters

1、第 1 位 工作原理代码，含义如下：

No. 1 Code for working principle, meaning as follows

代码 Code	L
含义 meaning	离心式风机 Centrifugal fan

2、第 2 位 用途代码，含义如下：

No. 2 Code for using, meaning as follows

代码 Code	K
含义 meaning	空调风机 Air conditioning fan

3、第 3 位 传动方式代码，含义如下：

No. 3 Drive mode code, meaning as follows

代码 Code	W	Z	P
含义 meaning	外转子式 External rotor motor drive	直联式 Shaft-drive	带传动式 Belt-drive

4、第 4 位 过流部件特征代码，含义如下：

No. 4 Characteristic Code of Overflow Components, meaning as follows

代码 Code	缺省 None	D	S	W
含义 meaning	单蜗壳双进风 Single-case Double-inlet	单蜗壳单进风 Single-case single-inlet	双蜗壳双进风 Double-case double-inlet	无蜗壳单进风 Single-inlet without case

5、第 5 位 叶片弯曲方向代码，含义如下：

No. 5 Blade bending direction code, meaning as follows

代码 Code	缺省 None	H
含义 meaning	前向叶片 Forward bending	后向叶片 Backward bending

二、第二部分：叶轮直径代码，以阿拉伯数字表示，单位为 mm

Part II: Impeller diameter code, expressed in Arabic numerals, unit mm

三、第三部分：蜗壳宽度代码，以英文字母表示，最多 2 位，含义如下：

Part III: Case width code, in English letters, up to 2 bits, meaning as follows

代码 Code	SS	S	M	L
含义 meaning	超窄型蜗壳 Tiny width	窄型蜗壳 Small width	中型蜗壳 Medium width	宽型蜗壳 Large width

四、第四部分：设计序列代码，以阿拉伯数字表示

Part IV: Designing Sequence Codes, Represented in Arabic Numbers



产品型号说明 Product Model Description

五、第五部分：电机极数代码，含义如下：

Part V: Motor pole number code, meaning as follows

代码 Code	2	4	6	4/6
含义 meaning	2 极电机 2-pole motor	4 极电机 4-pole motor	6 极电机 6-pole motor	4/6 极双速电机 4/6-Pole Double-speed Motor
代码 Code	6/8	4/6/8	EC	
含义 meaning	6/8 极双速电机 6/8-Pole Double-speed Motor	4/6/8 极三速电机 4/6/8-pole three-speed motor	无刷直流电机 EC motor	

六、第六部分：单相电机专用代码，含义如下：

Part VI: Specific code for single-phase motor, meaning as follows

代码 Code	缺省 None	C	C2	C3
含义 meaning	非单相电机 Non-single-phase motor	单相单速电机 Single-phase single-speed motor	单相双速电机 Single-phase two-speed motor	单相三速电机 Single-phase three-speed motor

七、第七部分：电机安装方式代码，含义如下：

Part VII: Code for motor installation mode, meaning as follows

代码 Code	含 义 meaning
缺省 None	B3 电机，带传动式的后置安装或直联式的卧式安装 B3 Motor, Belt-Drive Rear Installation or Shaft-drive Horizontal Installation
L	B5 电机，直联式立式安装 B5 motor, Shaft-drive vertical installation
X	B3 电机，带传动式下置安装 B3 Motor, Belt-drive Down Installation
D	B3 电机，带传动式顶置安装 B3 Motor, Belt-drive Top Installation
E	B3 电机，带传动式侧置安装 B3 Motor, Belt-drive Side Installation



产品型号说明 Product Model Description

◇ 轴流通风机型号说明 Model description of axial fan

例: ZL 400 B - 4 C2

轴流风机型号由 5 个部分组成

Axial fan model consists of five parts

一、第一部分: 型号代码, 以英文字母表示, 含义如下:

Part I: Model code, expressed in English letters

代码 Code	ZL	ZLW
含义 meaning	轴流风机 Axial Fan	外转子式轴流风机 Axial Fan with External Rotor

二、第二部分: 叶轮直径代码, 以阿拉伯数字表示, 单位为 mm

Part II: Impeller diameter code, expressed in Arabic numerals, unit mm

三、第三部分: 风向代码, 以英文字母表示, 含义如下:

Part III: Wind direction code, expressed in English letters, meaning as follows:

代码 Code	缺省 None	B
含义 meaning	风向从叶片吹向电机 Wind blows from blades to the motor	风向从电机吹向叶片 Wind blows from the motor to blades

四、第四部分: 电机极数代码, 含义如下:

Part IV: Motor pole number code, meaning as follows

代码 Code	2	4	6	4/6
含义 meaning	2 极电机 2-pole motor	4 极电机 4-pole motor	6 极电机 6-pole motor	4/6 极双速电机 4/6-Pole Double-speed Motor
代码 Code	6/8	4/6/8	EC	
含义 meaning	6/8 极双速电机 6/8-Pole Double-speed Motor	4/6/8 极三速电机 4/6/8-pole three-speed motor	无刷直流电机 EC motor	

五、第五部分: 单相电机专用代码, 含义如下:

Part V: Specific code for single-phase motor, meaning as follows

代码 Code	缺省 None	C	C2	C3
含义 meaning	非单相电机 Non-single-phase motor	单相单速电机 Single-phase single-speed motor	单相双速电机 Single-phase two-speed motor	单相三速电机 Single-phase three-speed motor



产品安装方式说明 Product Installation Mode

离心通风机安装方式按出风角度主要有 0° 、 90° 、 180° 、 270° 四种。

The installation of centrifugal fan has four main types according to the outlet angle: 0-degree, 90-degree, 180-degree and 270-degree.

风机安装方式也可根据用户需求订做其他出风角度。

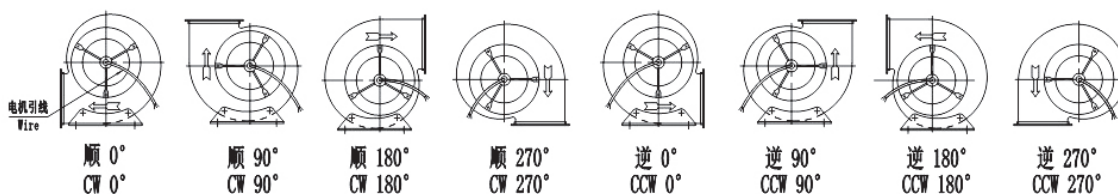
The installation mode of fan can also make other outlet angles according to user's needs.

离心通风机的旋向按叶轮旋转方向分为顺向、逆向。从风机原动机端看，即外转子系列风机面对引线端、皮带传动风机面对风机带轮、电机直联式风机面对电机看，叶轮旋转方向顺时针时称为顺向，叶轮旋转方向逆时针时称为逆向。

The rotating direction of centrifugal fan is divided into CW and CCW according to the rotating direction of impeller. From the driving side of the fan, that is, from the wire end of the centrifugal fan driven by external rotor motor, from the pulley side of the belt-drive centrifugal fan, from the motor side of the shaft-drive centrifugal fan, the clockwise direction of impeller rotation is called CW, and the counter-clockwise direction of impeller rotation is called CCW.

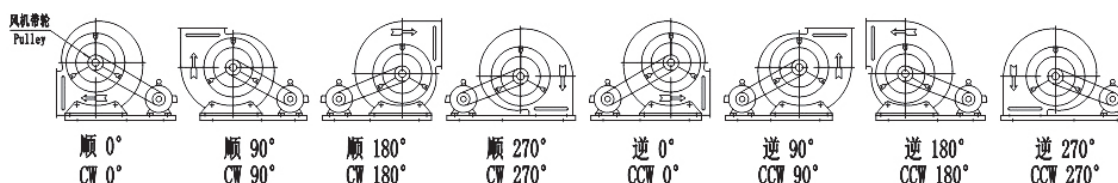
1、外转子系列离心通风机：面对风机引线端，叶轮旋转方向顺时针时称为顺向，叶轮旋转方向逆时针时称为逆向。

Direct-drive centrifugal fans with external rotor motor: Facing the wire end of the fan, the clockwise direction of impeller rotation is called CW, and the counter-clockwise direction of impeller rotation is called CCW.



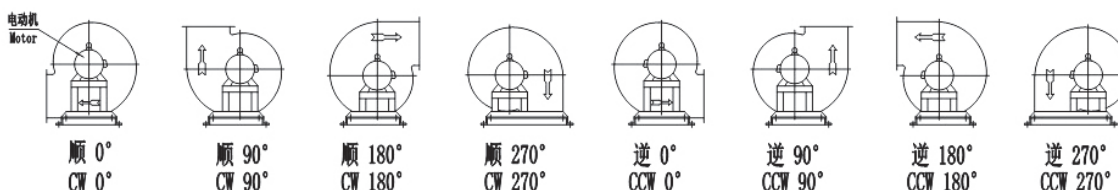
2、皮带传动离心通风机：面对风机带轮，叶轮旋转方向顺时针时称为顺向，叶轮旋转方向逆时针时称为逆向。

Belt-drive Centrifugal Fans: facing the fan pulley, the clockwise direction of impeller rotation is called CW, and the counter-clockwise direction of impeller rotation is called CCW.



3、电机直联式离心通风机：面对电机，叶轮旋转方向顺时针时称为顺向，叶轮旋转方向逆时针时称为逆向。

Shaft-drive centrifugal fans: Facing the motor, the clockwise direction of impeller rotation is called CW, and the counter-clockwise direction of impeller rotation is called CCW.



我公司离心通风机常规产品旋向为顺向，若用户对风机旋向有不同需求，订货时须注明。

The default rotation direction of our centrifugal fans is CW. If users want different rotation directions, They must put out clearly at the time of ordering..



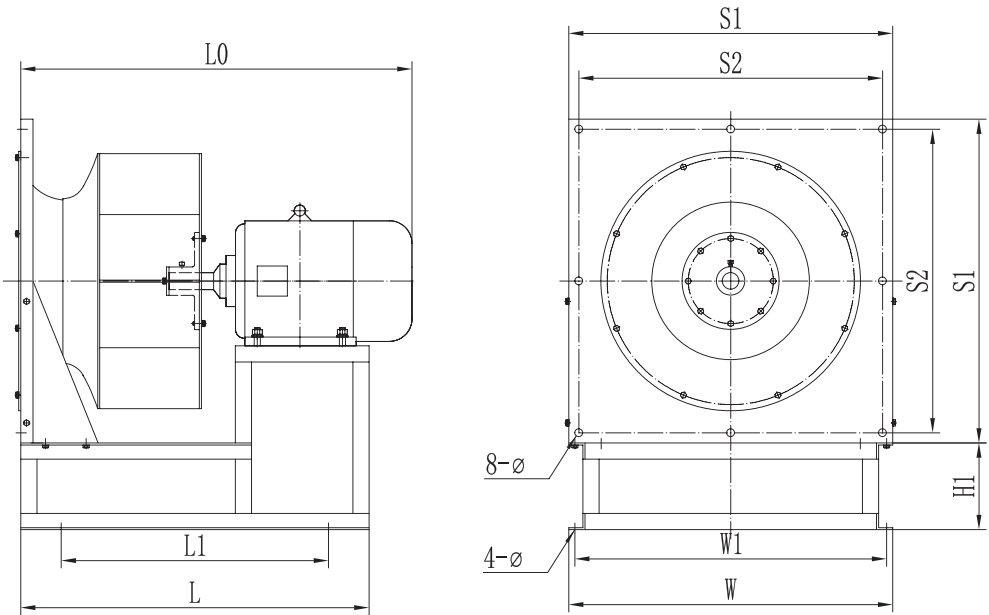
风机性能及技术参数 Performance parameters and technical data

风机机座号 Fan frame size	额定性能 Rated performance			流量使用范围 Volume Range (m ³ /h)	电压 Voltage (V)	频率 freq. (Hz)	功率 Power (kW)	电流 Current (A)	重量 Weight (kg)	安装及 外形尺 寸图 Page
	流量 Volume (m ³ /h)	全压 Pressure (Pa)	噪声 Noise [dB(A)]							
LKZD450S-6	4500	800	77	3800 ~ 5000	380	50	1.5	4	71	P81
LKZD450M-6	5500	800	78	4650 ~ 6100	380	50	2.2	5.6	92	P81
LKZD450L-6	6500	800	79	5500 ~ 7200	380	50	3.0	7.2	124	P81
LKZD500S-6	7000	1000	80	5950 ~ 7700	380	50	4.0	9.4	108	P82
LKZD500M-6	8000	1000	81	6800 ~ 8800	380	50	4.0	9.4	128	P82
LKZD500L-6	9000	1000	82	7650 ~ 9900	380	50	5.5	12.6	177	P82
七、LKZDH 系列后向单进风直联式离心通风机 LKZDH Series Backward-curved-blade Single-inlet Shaft-drive Centrifugal Fans										
LKZDH355-2	4200	1570	81	2000 ~ 4900	380	50	3	6.4	86	P83
LKZDH400-2	5600	1920	84	2800 ~ 7000	380	50	5.5	11.1	110	P83
LKZDH450-2	8400	2350	87	4200 ~ 9800	380	50	11	21.8	180	P83
LKZDH500-4	5900	740	76	2500 ~ 6500	380	50	2.2	5.0	116	P84
LKZDH560-4	9400	825	78	4000 ~ 10000	380	50	4	6.8	160	P84
LKZDH630-4	12000	1090	82	5600 ~ 15000	380	50	7.5	15.4	218	P84
八、LKZWH 系列后向无蜗壳单进风直联式离心通风机 LKZWH Series Backward-curved-blade Single-inlet Shaft-drive Plug Fans										
LKZWH355-2	4000	900	75	5100 ~ 6600	380	50	3	6.4	55	P85/P86
LKZWH355-4	2000	220	69	2550 ~ 3300	380	50	0.55	1.5	35	P85/P86
LKZWH400-2	6000	1000	80	6800 ~ 8800	380	50	4	8.2	95	P85/P86
LKZWH400-4	3000	300	71	3400 ~ 4400	380	50	0.55	1.5	45	P85/P86
LKZWH450-2	9000	1500	82	10200 ~ 13200	380	50	7.5	15	105	P85/P86
LKZWH450-4	4500	400	73	5100 ~ 6600	380	50	1.1	2.7	60	P85/P86
LKZWH500-4	6000	490	75	6800 ~ 8800	380	50	2.2	5	90	P85/P86
LKZWH500-6	4000	200	69	4650 ~ 6100	380	50	0.75	2.2	75	P85/P86
LKZWH560-4	9000	600	77	10200 ~ 13200	380	50	3	6.8	110	P85/P86
LKZWH560-6	5600	250	73	6800 ~ 8800	380	50	1.1	3.2	95	P85/P86
LKZWH630-4	12500	760	78	14450 ~ 18700	380	50	5.5	11.6	155	P85/P86
LKZWH630-6	8000	300	74	10200 ~ 13200	380	50	2.2	5.6	135	P85/P86
LKZWH710-4	18000	1000	80	18700 ~ 24200	380	50	11	22.6	195	P85/P86
LKZWH710-6	11500	400	76	12750 ~ 16500	380	50	3	7.2	180	P85/P86
LKZWH800-4	25000	1250	82	25500 ~ 33000	380	50	18.5	35.9	315	P85/P86
LKZWH800-6	16000	500	78	17000 ~ 22000	380	50	5.5	12.6	255	P85/P86

风机外形及安装尺寸 Configuration dimensions

● LKZWH系列后向无蜗壳单进风直联式通风机
LKZWH backward single-inlet plug fans

卧式
安装
尺寸



风机机座号 Fan frame size	S1	S2	L0	L	L1	W	W1	H1	8-φ	4-φ
LKZWH355-2	400	350	510	440	320	400	360	515	8-φ 12	4-φ 12
LKZWH355-4	400	350	460	400	280	400	360	475	8-φ 12	4-φ 12
LKZWH400-2	450	400	670	550	430	450	410	645	8-φ 14	4-φ 14
LKZWH400-4	450	400	480	420	300	450	410	495	8-φ 14	4-φ 14
LKZWH450-2	500	450	700	580	460	500	460	675	8-φ 14	4-φ 14
LKZWH450-4	500	450	530	460	340	500	460	540	8-φ 14	4-φ 14
LKZWH500-4	560	510	630	550	350	560	520	630	8-φ 14	4-φ 14
LKZWH500-6	560	510	560	490	290	560	520	570	8-φ 14	4-φ 14
LKZWH560-4	630	580	660	580	380	630	590	660	8-φ 14	4-φ 14
LKZWH560-6	630	580	620	550	350	630	590	625	8-φ 14	4-φ 14
LKZWH630-4	730	680	770	660	460	730	690	715	8-φ 14	4-φ 14
LKZWH630-6	730	680	720	620	420	730	690	660	8-φ 14	4-φ 14
LKZWH710-4	800	750	880	760	560	800	760	920	8-φ 14	4-φ 14
LKZWH710-6	800	750	840	730	530	800	760	880	8-φ 14	4-φ 14
LKZWH800-4	900	850	1010	890	690	900	860	965	8-φ 14	4-φ 14
LKZWH800-6	900	850	880	770	570	900	860	865	8-φ 14	4-φ 14

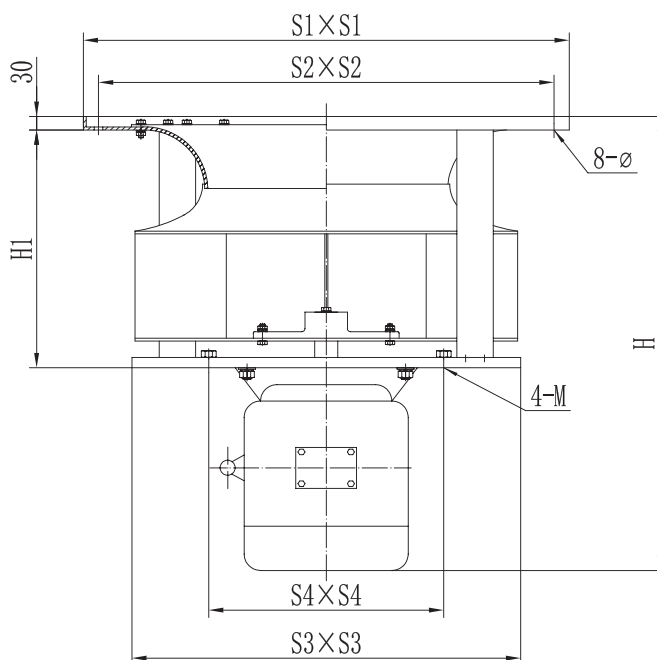


风机外形及安装尺寸 Configuration dimensions

● LKZWH系列后向无蜗壳单进风直联式通风机

LKZWH backward single-inlet plug fans

立式
安装
尺寸



风机机座号 Fan frame size	S1	S2	S3	S4	H1	H	8-φ	4-M
LKZWH355-2	450	400	360	240	240	515	8-φ 12	4-M10
LKZWH355-4	450	400	360	240	240	475	8-φ 12	4-M10
LKZWH400-2	500	450	400	280	260	645	8-φ 14	4-M12
LKZWH400-4	500	450	400	280	260	495	8-φ 14	4-M12
LKZWH450-2	550	500	450	300	290	675	8-φ 14	4-M12
LKZWH450-4	550	500	450	300	290	540	8-φ 14	4-M12
LKZWH500-4	610	560	500	320	320	630	8-φ 14	4-M12
LKZWH500-6	610	560	500	320	320	570	8-φ 14	4-M12
LKZWH560-4	680	630	560	340	350	660	8-φ 14	4-M12
LKZWH560-6	680	630	560	340	350	625	8-φ 14	4-M12
LKZWH630-4	780	720	630	360	418	715	8-φ 14	4-M12
LKZWH630-6	780	720	630	360	418	660	8-φ 14	4-M12
LKZWH710-4	850	800	730	420	420	920	8-φ 14	4-M12
LKZWH710-6	850	800	730	420	420	880	8-φ 14	4-M12
LKZWH800-4	950	900	810	420	440	965	8-φ 14	4-M12
LKZWH800-6	950	900	810	420	440	865	8-φ 14	4-M12





山东齐能风机有限公司

地址：山东省淄博市临淄区稷下街道

电话：0533-7311186

传真：0533-7316278

网址：www.kongtiaofengji.com

邮箱：kongtiaofengji@163.com

Shandong Qineng Ventilator Co.,LTD.

Add: Jixia Street, LinZi District, Zibo City, Shandong

Tel: 0533-7311186

Fax: 0533-7316278

Web: www.kongtiaofengji.com

E-mail: kongtiaofengji@163.com